

XC958E



WHEEL LOADER

 **SOLID TO SUCCEED**



 **XCMG EARTHMOVING MACHINERY
BUSINESS DIVISION**

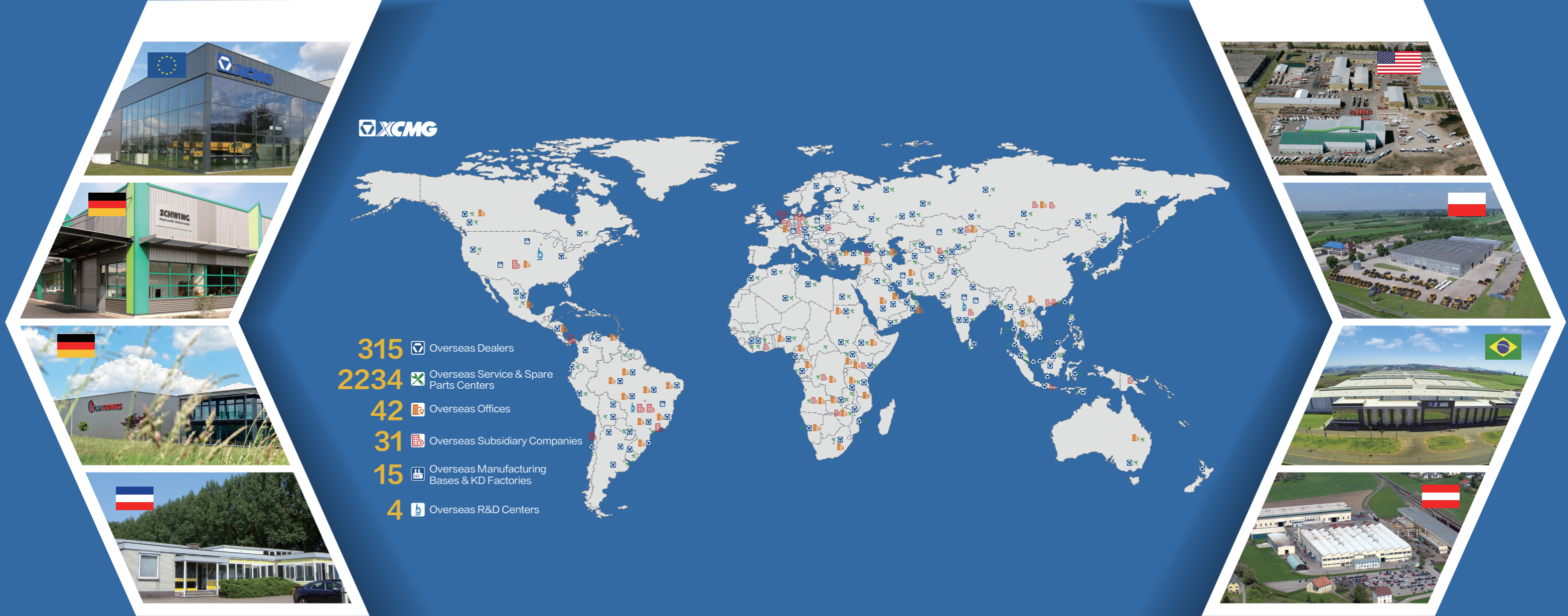
CUSTOMER SERVICE
HOTLINE (IN CHINA): **400-110-9999**

ADDRESS: NO. 99, KUNPENG NORTH ROAD, XUZHOU ECONOMIC
DEVELOPMENT ZONE, JIANGSU PROVINCE, CHINA
ZIP CODE: 221004
TEL: 0516 87938888
EMAIL: sales@xcmg.com
SITE: <http://www.xcmg.com>

2023-06



1. Scan the QR code to follow "XCMG Loading Machinery"
2. Click the "Loader King" in the lower-left corner to obtain
more product details after registration



About XCMG

As a 100 billion-level leading company renowned for the largest scale, the most advanced technology, the largest export volume, and the highest competitiveness and influence in China's construction machinery industry, Xuzhou Construction Machinery Group Co., Ltd. (XCMG) not only has dominated the Chinese market for decades, but also is committed to expanding its worldwide presence as the third largest supplier in this field and 395th of Global 500.

The product portfolio offered by XCMG covers 16 categories such as hoisting machinery, excavation machinery, concrete machinery, mining machinery, earthmoving machinery, and road construction machinery, as well as three key components, i.e., hydraulic systems, transmission systems and electrical control systems. In these areas, our hoisting machinery ranks first in the world, and our complete solutions for road construction and maintenance machinery, piling machinery and concrete machinery also take the leading position in global rankings.

XCMG has been granted more than 8,000 patents in total, including more than 1,900 invention patents and more than 130 international PCT patents.

We have established our own R&D centers, manufacturing plants or KD factories in more than 10 countries, e.g., Germany, USA, Brazil and India, and have acquired 3 European companies including Schwing from Germany.

The manufacturing factory in Brazilian, which is built on a barren land with an investment of USD 350 million, has become a successful model of China-Brazil economic cooperation. At present, our products are exported to 187 countries and regions, covering 97% of the countries along the "Belt and Road". XCMG takes the largest share of the business exported to 35 countries, with the annual export volume and overseas revenue remaining in first place and outperforming all other competitors in China.





High reliability power transmission system

- **Engine:** The latest WP10H engine from Weichai is used to meet the European stage V emission standard. The engine has a rated power of 170kW, strong power, and the advantages of low fuel consumption and low emissions. The desert air filter with three-level filtration can adapt to multiple dust conditions. The engine has three working modes; light load, medium load, and heavy load, which meet the needs of different working conditions and achieve the maximum efficiency of the entire machine.
- **Transmission:** The MYF200 (V) semi-automatic electric control transmission is adopted, with an automatic gear shift switch (KD function). The forward and reverse four gears have advanced performance, which can simplify driver operation, effectively reduce driver workload, adapt to various operating conditions of the loader, and improve work efficiency. Large load-bearing capacity, fully meeting the power requirements of the loader. The implementation of the four forward and reverse gears can effectively improve the economy and engine service life of loaders with complex operating conditions and frequent reversing. Electronically controlled gear shifting, and easy to operate. It has a neutral start protection function, which can effectively protect the transmission components and ensure the safe use of the loader. Equipped with forced downshift (KD) function, it can simplify driver operation and effectively reduce driver operation intensity.
- **Drive axle:** The special reinforced drive axle for construction machinery is adopted, with stable quality, reliable performance and convenient maintenance. Three section heavy-duty transmission shaft, leading in reliability.



Hydraulic system

- The hydraulic system is equipped with XCMG patented APD constant variable second-generation hydraulic system as standard. When in the steering state, the variable displacement plunger pump supplies oil to the steering cylinder according to actual needs, without generating excess flow, achieving one-time energy-saving. During earthmoving shoveling operations, the variable displacement pump and the quantitative pump together supply oil to the working device oil cylinder, and the dual pumps merge to achieve secondary energy conservation.
- When the load exceeds the rated value, the quantitative pump unloads at low pressure to achieve three times of energy conservation. When the load reaches its limit, the displacement of the variable displacement plunger pump is zero, achieving four times of energy-saving.
- The steering limit adopts a dual method of hydraulic flexibility and mechanical rigidity, which is flexible first and then rigid to reduce impact. Equipped with emergency steering function to improve overall safety.



Electrical system

- The electrical system adopts fully sealed connectors, which significantly improves dust and water resistance performance. Equipped with an integrated enclosed fuse box, inspection and maintenance are more convenient and efficient. Adopting a new digital VDO combination instrument, it displays real-time information such as engine speed, water temperature, pressure, and has a fault alarm function.



Cab

- The new international version fully enclosed cab has a spacious interior and a wide view. The cab adopts ROPS&FOPS structure, with high safety. High performance dual slide shock absorption seats combined with multi-directional adjustable steering columns can meet the usage requirements of different drivers. Adopting a follow-up control box, adding a mobile phone charging interface and storage box, reflecting the humanized design concept. The control lever is within reach, making the entire machine comfortable and convenient to operate.



Frame

- The front and rear frames adopt a large articulated and heavy-duty design, which disperses the force at the articulated joints, reduces the stress on the articulated pins, and improves the service life of the bearings. Increase maintenance space at the hinge joint to improve the maintainability of the entire machine.
- The structural components are optimized using finite element analysis to reduce stress concentration, eliminate local weaknesses, and ensure compliance with various harsh working conditions.
- The lower hinge pin adopts double tapered roller bearings, which increase the bearing capacity and improve driving stability.
- Enhance the rigidity of the front frame, providing a solid mounting base for the boom and cylinder, which can absorb strong torque, impact force, and loading force.
- Extra-large counterweight enhances high stability during operation. Add fuel tank guards to prevent deformation or damage of the fuel tank under harsh working conditions.



Working device and bucket

- The working device has been optimized and adopts a Z-type reverse six link structure with a single rocker arm, short pull rod, and a horizontal boom cylinder, which has excellent operational performance and efficiency.
- The main hinge point adopts a two-stage dustproof structure, which can effectively prevent dust and protect the lubricating grease from pollution, providing reliable protection for the hinge pin and shaft sleeve.
- The lubrication method for the pin shaft adopts injecting oil from the flange, eliminating the pin shaft lubrication oil hole, and improving the strength of the pin shaft.



Brake system

- The service braking adopts an air top oil and caliper disc four-wheel braking system, which can exert strong braking force while reducing the burden on each brake piston and improving durability. Equipped with a multifunctional combination valve with oil-water separation function, ensuring the cleanliness of the intake air of the air storage cylinder. Increase the volume of the air reservoir to improve the reliability of braking; The brake booster cylinder adopts imported sealing components, effectively solving the problems of air and oil leakage.



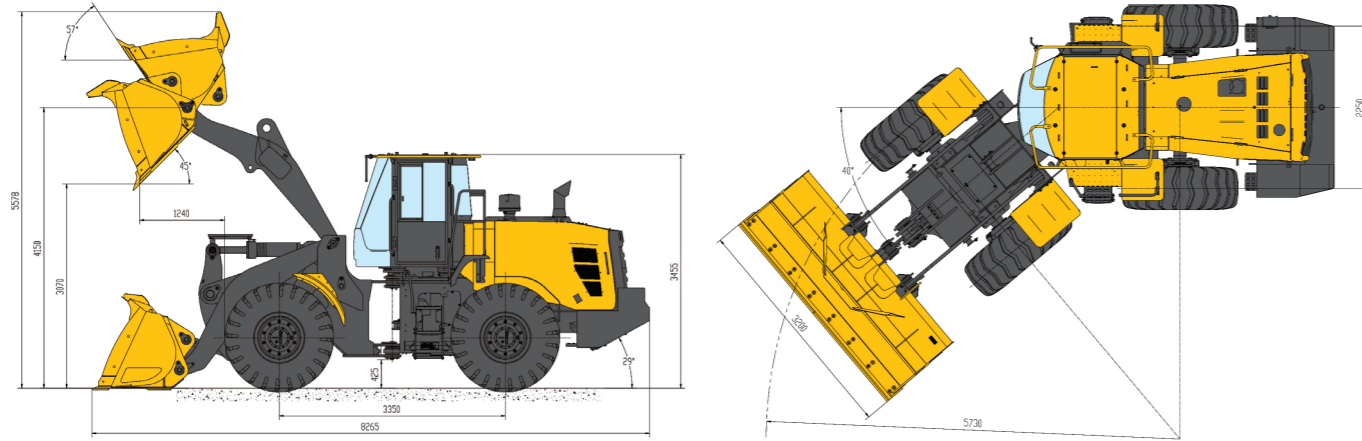
Maintainability

- Various maintenance points such as oil level inspection, oil addition, and lubricating grease filling are arranged in easily accessible locations, and the maintenance, disassembly, and replacement of air filter elements, electrical equipment, etc. can be easily carried out. The hood adopts a rear flip design, with a large opening angle, which is convenient for engine and radiator maintenance, making maintenance easy and convenient.
- Equipped with a centralized pressure measurement system, maintenance and repair are more convenient.



Versatility

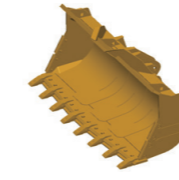
- XC958E loader can be optionally equipped with snow plow, high unloading, side unloading, clamp, 2.5-5.0m³. Different bucket capacities and work tools meet different operational needs.



main components

Item	Parameter	
Bucket capacity m ³	3.5	
Rated load kg	5500	
Operating weight kg	18870±300	
Unloading height mm	3070	
Unloading distance mm	1240	
Wheelbase mm	3350	
Tread mm	2250	
Overall length mm	8265	
Overall height mm	3455	
Bucket width mm	3200	
Max digging force kN	175±5	
Max traction force kN	160±5	
Tire center (turning radius) mm	5730	
Ground clearance mm	425	
Departure angle °	29±1	
Max steering angle °	40±1	
Boom lifting time S	≤5.3	
Total cycle time S	≤10	
Engine	Model	WP10HG230E670
	Power kW	170
	Speed r/min	2200
Tire	23.5R25★★	
Travel speed km/h	1 st 2 nd 3 rd 4 th F gear	6.5/11/24/38
	1 st 2 nd 3 rd 4 th R gear	6.5/11/24/38

- Main specs: Weichai stage V engine, XCMG MYF200 transmission, dry drive axle, double line, constant variable.
- The technology of XCMG loader is subject to constant improvement and upgrading. In case the specifications or detailed appearance contained in this brochure differ from actual products, the latter shall prevail;
- XCMG reserves the right of final interpretation for the above. Our products may be modified without prior notice to users.



XCMG approved attachments



Genuine parts



Financial solutions



Maintenance contract



Telematics

Professional Integrated Complete Solutions

XCMG has built a strong reputation based on the quality, reliability and durability of its construction machinery. What's more, XCMG has gradually established a service network to constantly provide its local integrated and highly efficient complete solutions for all customers.

Full Range of Services Ready for you

In order to respond to your needs as fast as possible, XCMG's experts are on their way to your job site from one of our facilities near you. Full range of services are available in order to reduce your total cost of ownership and increase your revenue.



XCMG Global Spare Parts System

The screenshot shows the XCMG Global Spare Parts System web interface. It displays a parts list for a 'MEDIUM HEAVY DUTY WHEEL LOADER' with columns for Part Number, Material Encoding, Name, Quantity, and Remarks. The interface includes navigation menus, search bars, and detailed diagrams of the loader's components, such as the engine, transmission, and axle assembly.