

All Rights Reserved

Materials and specifications are subject to change without notice. Featured machines in photos may include additional equipment. See your XCMG dealer for available options.



Mini Excavators
XE80E



XCMG European Sales & Services GmbH

Add: Europark Fichtenhain B 4, 47807 Krefeld, Deutschland

Tel: +49 (0) 2151 8209 351

Fax: +49 (0) 21 51-82 09-499

E-mail: Europe@xcmg.com

www.xcmg.com

XUZHOU CONSTRUCTION MACHINERY GROUP IMP. & EXP. CO., LTD

Add:NO.1, Tuolanshan Road, Xuzhou Economic Developing Zone,
Jiangsu,China 221004

Tel: +86 (0) 516 8773 9228

Fax: +86 (0) 516 8773 9230

E-mail: Europe@xcmg.com

Rated Power: 54.6 kw
Operating Weight: 9.5 t
Standard Bucket Capacity: 0.35 m³





INTRODUCTION OF XCMG

Founded in 1943, XCMG is a multinational corporation with the most comprehensive range of competitive, influential products in the construction machinery industry. Our business covers eight key areas: construction machinery, heavy trucks, mining machinery, sanitation machinery, machinery components, construction, finance, and the ICT industry.

XCMG has established a global R&D system with a total of six centers across China, the US, Germany, Brazil and India, with China national technology center at its core. In addition to a number of manufacturing bases across China, the US, Germany, the Netherlands, Poland, Austria, Brazil, India, and Uzbekistan, we possess two complete machine brands (XCMG, Schwing), and several component brands including FT, AMCA, and Wika. It is the strength of this global R&D system and manufacturing operations that has made XCMG the industry-leading global construction equipment manufacturer that it is today.

For more than 30 years, XCMG has been sowing the seeds of overseas development as the No. 1 exporter in China's construction machinery industry. Today, we have 42 branches and offices, 315 distributors, 526 contractors in 188 countries and regions worldwide.

XCMG IN EUROPE

Since its inception in 2012, in these years of quick development in Europe, XCMG has gradually established a completed system including R&D development, local distribution network, supply chain management and an integrated customer services center. Nowadays, with 4 branches, XCMG has 178 multinational employees in Europe, of which more than 50% are R&D engineers:

ERC: XCMG European Research Center GmbH

EPC: XCMG European Purchasing Center GmbH

ESS: XCMG European Sales and Services GmbH

Our local professional R&D team and cutting-edge innovation platform guarantee that our products are carefully crafted to the smallest detail according to diverse needs of European customers.



► Performance meets Efficiency

Designed to combine power and smoothness, the XE80E is ready to take on the challenge. This machine can easily perform on your jobsites even in confined spaces. High digging and lifting performance together with smooth driving performance make this XE80E complete.

The Kubota V3307 Stage V common rail diesel engine with EGR, DOC, and DPF technology matches excellently with our improved hydraulic load sensing system. This combination ensures fuel-efficient and smooth control, regardless of its load. Our powerful XE80E thus has become more fuel efficiency even under heaviest circumstances and is a pleasure to operate.

Compact design

The boom swing function together with the short tail swing allows you to work in very narrow areas. The left and right boom swing angle is respectively 62° and 50°, which makes the XE80E easy capable to realize complex tasks in difficult operation conditions like digging parallel to a wall in a narrow driveway.

In full control of your hydraulic system

The XE80E is standard equipped with proportional controlled AUX1. From the monitor you can program multiple attachments.

Safety first

Together with the blade-holding valve, it will make sure that you can handle all you are digging and lifting tasks in the safest way.



► Ergonomic and Comfortable

The XE80E is designed to provide you with the best working conditions. The cab has a wide entrance door, which makes it more accessible. The OPG/ROPS(ISO 3471) cabin maximizes your safety

- ① Safety lever
- ② Color LCD monitor
- ③ Operation stick
- ④ Suspension seat
- ⑤ Hammer
- ⑥ Air conditioning
- ⑦ Proportional hydraulic joysticks
- ⑧ Foldable walking pedal
- ⑨ Arm Rest





Easy Access for Maintenance

► Easy Service Access

Our XE80E was developed with particular attention to easy service access. With a single access point for the daily maintenance of all main components, fuel level gauge, and refueling through the lockable cap.



One-sided Engine Maintenance

The XE80E is designed for lower maintenance cost with longer service intervals - resulting in more machine availability on-site. Meanwhile, skilled XCMG-trained technicians are available to provide extra support when needed.



- 1 Coolant
- 2 Air filter
- 3 Radiator
- 4 Engine postprocessor



Technical Specifications

■ Engine

XE80E	
Make/Model	Kubota V3307CRTE5
No. of cylinders	4
Rated power at 2,200 rpm	54.6 kW
Max. torque at 1,500 rpm	265 N·m
Idle (low - high)	1,200-2,000 rpm
Piston displacement	3.3 L
Bore × stroke	94 mm × 120 mm
Starter	12 V/3.0 kW
Batteries - Alternator	12 V/3.0 kW
Air filter	Double element with automatic dust evacuation

■ Fluid capacities

XE80E	
Fuel tank	130 L
Cooling system (radiator capacity)	14 L
Hydraulic oil tank	110 L
Engine oil	10 L
Swing drive	0.5 L
Travel device	2X1.3 L

■ Environment

Noise levels comply with environmental regulations (dynamic values).

• Noise emission

XE80E	
Noise level LwA	
Guaranteed	99 dB(A)
Measured	99 dB(A)
Operator LpA	73 dB(A)

■ Undercarriage

X-type undercarriage. The heavy-duty crawler chassis is very resilient with its fully welded, stress-free structure. Long service life is ensured by the use of first-class materials: hydraulic chain adjusters with shock-absorbing return springs, lifetime-lubricated track rollers and idlers.

• Number of rollers and track shoes per side

XE80E	
Upper rollers (standard shoe)	1(140 mm)
Lower rollers	5(140 mm)
Number of links & shoes	40
Overall track length	2,899 mm

■ Weight

With 1.82 m arm and 0.35 m³ bucket

	Shoe width (mm)	Operating weight (kg)	Ground pressure (kPa)
Rubber	450	9,200	39.3
Steel	450	9,500	42.8

■ Hydraulic system

This XCMG design allows independent and combined operations of all functions by hydraulic piloted controlled levers

• Pump

Type	Displacement (cm³/rev)	Max. flow @2100rpm (l/min)	Relief valve pressure (kgf/cm²)	
Main(load sensing)	Load sensing pump	104.3	219	326.4

• Maximum system pressure

XE80E	
Boom/arm/bucket	316 bar
Work/travel	310 bar
Swing	240 bar

■ Swing mechanism

High-torque, axial piston motor with planetary reduction gear bathed in oil. Swing circle is single-row, shear type ball bearing with induction-hardened internal gear. Internal gear and pinion gear immersed in lubricant. Equipped with an automatic multi-disc slow brake.

• Swing system

XE80E	
Max. swing speed	12 rpm
Max. swing torque	364 kgf.m
Boom swing angle L/R	62/50

■ Drive

• Speed & traction

XE80E	
Travel speed (low - high)	2.7-4.9 km/h
Maximum traction force	68 kN
Gradeability	70%/35°

■ Digging forces (ISO 6015)

At power boost.



XE80E	
Digging force, standard arm (ISO 6015)	41 kN
Digging force, bucket (ISO 6015)	64 kN

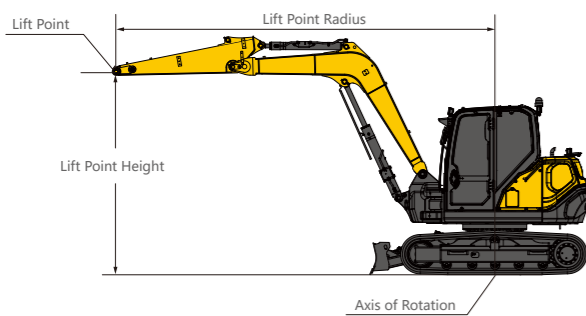
■ Hydraulic Cylinders



	Quantity	Bore×rod diameter×stroke(mm)
boom	1	110x75x922
Arm	1	95x60x885
Bucket	1	85x55x742
Dozer	1	120x80x157
Boom swing	1	110x65x592

XE80E

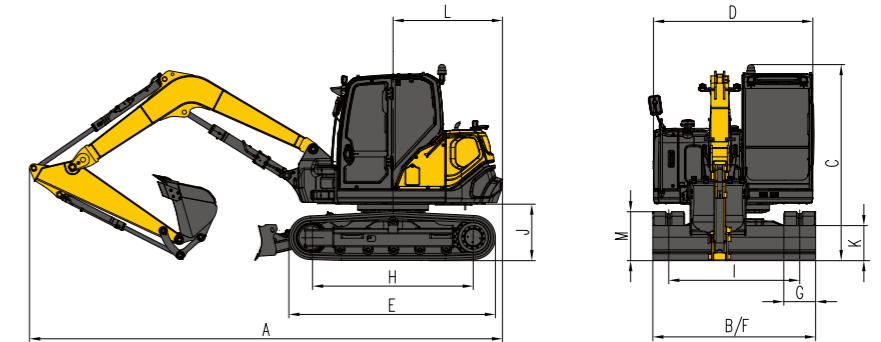
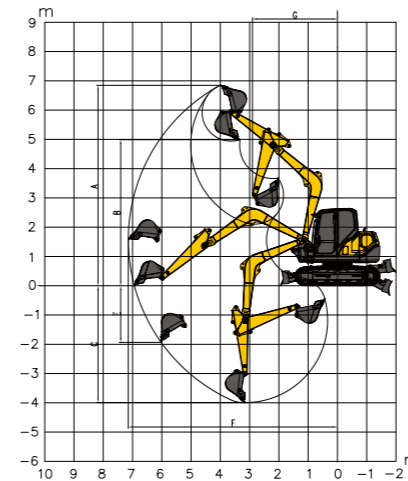
■ Cab • standard arm (1,820 mm) • standard counterweight and additional counterweight • without bucket

Lift Point Height	Over Front 						Over Side 						Max Radius		
	Lift At Max Radius(kg)	1.0 m	2.0 m	3.0 m	4.0 m	5.0 m	6.0 m	Lift At Max Radius(kg)	1.0 m	2.0 m	3.0 m	4.0 m		5.0 m	6.0 m
6m	1,768			3,436	2,410			1,424			3,167	1,985			4,000
5m	1,333			2,712	2,471	1,722		1,075			2,712	1,991	1,395		5,000
4m	1,136			2,406	1,697	1,268		914			1,928	1,371	1,024		6,000
3m	1,034				1,639	1,247		829				1,251	1,004		6,000
2m	987				1,570	1,214		789				1,251	973		6,000
1m	980				1,513	1,183		783				1,196	943		6,000
0m	1,016				1,480	1,164		811				1,165	925		6,000
-1m	1,077			2,009	1,474	1,166		883			1,556	1,160	927		6,000
-2m	688			1,639	1,293			688			1,586	1,182			5,000



 : Over front
 : Over side or 360°

- The lifting capacity is based on the ISO 10567 standard.
- * = The maximum lifting capacity is limited by the hydraulic capacity of the machine.
- The lifting capacity does not exceed 87 % of the hydraulic capacity or 75 % of the tipping load with the machine on level and firm ground.
- The operator should be familiar with the machines operating- and maintenance manual. Local regulations concerning the safe operation of machinery must be followed at all times.
- The lift diagrams only covers machines that are originally built by XCMG; without lifting chains and any other lifting equipment.
- When the excavator is used to lift or handle materials, it must comply with local regulations and be equipped with the necessary hose burst valves and an overload warning device complying with EN474-5.



Working range

	XE80E	
A	Max. digging height	6,850 mm
B	Max. dumping height	4,988 mm
C	Max. digging depth	3,993 mm
E	Max. vertical wall digging depth	1,935 mm
F	Max. digging reach	7,145 mm
G	Min. swing radius	2,900 mm

Dimensions

	XE80E	
A	Overall length	6,585 mm
B	Overall width	2,300 mm
C	Overall height	2,730 mm
D	Width of platform	2,250 mm
E	Length of crawler	2,900 mm
F	Overall width of chassis	2,300 mm
G	Width of crawler	450 mm
H	Track length on ground	2,272 mm
I	Crawler gauge	1,850 mm
J	Clearance under counterweight	818.5 mm
K	Min. ground clearance	386.5 mm
L	Min. tail swing radius	1,450/1,545 mm
M	Height of track	698 mm

Standard and optional equipment

Engine

Kubota Engine V3307, EU Stage V, EGR, DPF	●
---	---

Hydraulic system

Single way pipeline (AUX1)	●
Dual way pipeline (AUX2)	○
Single Boom, Boom swing	●
Hydraulic quick coupler line	○
Fingertip proportional control	●

Cab & interior

TOPS/ROPS	●
Top skylight (with sunroof)	●
Mechanical suspension seat	●
Air conditioning	●
Color LCD monitor	●
AM/FM radio with Bluetooth	○
DAB radio with Bluetooth	●

Undercarriage

Fixed undercarriage	●
Dozer blade	●
Tie down bracket	●
Rubber tracks 450 mm	○
Steel tracks 450 mm	●
Track rubber block	○

Safety

Travel alarm	●
Rotating beacon	●
Engine overheat warning and restart prevention system	●
Quick coupler switch with alarm	○
Emergency stop switch	●
Front and top cab protection	○
LED work lights (2 on cab-front, 1 on cab-rear, 2 on boom, 1 on rear hood)	●
Rear camera	●

Other

Standard arm 1,823 mm	●
General purpose bucket 0.35 m³	●

Standard: ●
 Optional: ○

Some of these options may be standard in some markets. Some of these options may not be available for certain markets. Please check with your local XCMG dealer for more information about availability or to adapt your machine to your application needs.



Optimum services , XCMG Guaranteed



XCMG approved attachments



Genuine parts



Extension of warranty



Financial solutions



Maintenance contract



Telematics



Monitoring systems

Professional Integrated Complete Solutions

XCMG group has built a strong reputation based on the quality, reliability and durability of its construction machinery. What's more, XCMG has gradually established a service network to constantly provide its local integrated and highly efficient complete solutions for all users.

Full range of services ready for you

In order to respond to your needs as fast as possible, XCMG experts are on their way to your job site from one of our facilities near you. Full range of services are available in order to reduce your total cost of ownership and increase your revenue.



XCMG Global Spareparts System



Mobile cranes



Excavators



Aerial work platforms



Wheel loaders



Road machinery

