

All Rights Reserved

Materials and specifications are subject to change without notice. Featured machines in photos may include additional equipment. See your XCMG dealer for available options.



Hydraulic Excavators
XE220E



XCMG European Sales & Services GmbH

Add: Europark Fichtenhain B 4, 47807 Krefeld, Deutschland

Tel: +49 (0) 2151 8209 351

Fax: +49 (0) 21 51-82 09-499

E-mail: Europe@xcmg.com

XUZHOU CONSTRUCTION MACHINERY GROUP IMP. & EXP. CO., LTD

Add:NO.1, Tuolanshan Road, Xuzhou Economic Developing Zone,
Jiangsu,China 221004

Tel: +86 (0) 516 8773 9228

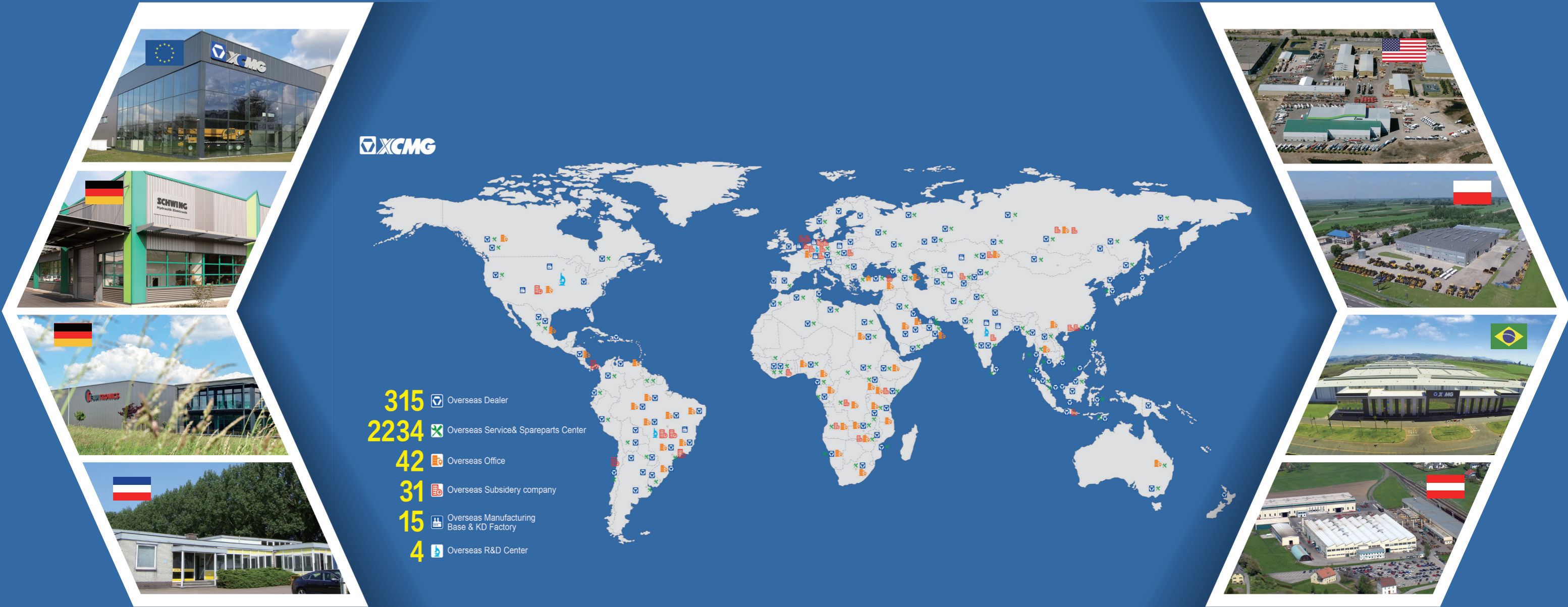
Fax: +86 (0) 516 8773 9230

E-mail: Europe@xcmg.com

www.xcmg.com

Rated Power: 129 kW
Operating Weight: 23.5 t
Standard Bucket Capacity: 1.05 m³





INTRODUCTION OF XCMG

Founded in 1943, XCMG is a multinational corporation with the most comprehensive range of competitive, influential products in the construction machinery industry. Our business covers eight key areas: construction machinery, heavy trucks, mining machinery, sanitation machinery, machinery components, construction, finance, and the ICT industry.

XCMG has established a global R&D system with a total of six centers across China, the US, Germany, Brazil and India, with China national technology center at its core. In addition to a number of manufacturing bases across China, the US, Germany, the Netherlands, Poland, Austria, Brazil, India, and Uzbekistan, we possess two complete machine brands (XCMG, Schwing), and several component brands including FT, AMCA, and Wika. It is the strength of this global R&D system and manufacturing operations that has made XCMG the industry-leading global construction equipment manufacturer that it is today.

For more than 30 years, XCMG has been sowing the seeds of overseas development as the No. 1 exporter in China's construction machinery industry. Today, we have 42 branches and offices, 315 distributors, 526 contractors in 188 countries and regions worldwide.

XCMG IN EUROPE

Since its inception in 2012, in these years of quick development in Europe, XCMG has gradually established a completed system including R&D development, local distribution network, supply chain management and a integrated customer services center.

Nowadays, with 4 branches, XCMG has 178 multinational employees in Europe, of which more than 50% are R&D engineers:

ERC: XCMG European Research Center GmbH

EPC: XCMG European Purchasing Center GmbH

ESS: XCMG European Sales and Services GmbH

Our local professional R&D team and cutting-edge innovation platform guarantee that our products are carefully crafted to the smallest detail according to diverse needs of European customers.



The XCMG XE220E Stage V builds further on its reputation as one of the most sold and appreciated excavators for XCMG. The further development resulted in a product that is more fuel efficient on the one side and more productive at another side.

If you are looking to get your work done with a durable brand, you can trust XCMG and look no further than our XE220E.

► RELIABILITY

Even under the harshest conditions, XCMG has made its aim to build long-life products. XCMG has already a long relationship with the best component suppliers in the world. Cummins engines, Kawasaki KPM hydraulic pumps, main control valve and swing motor, and high quality travel motors guarantee you the best performance. Oversized cylinders in combination with long-life reinforced pins, and polymer shims and bushings ensure best performance with unchanged durability.

► PRODUCTIVITY AND EFFICIENCY

Strong and unmatched bucket and arm digging forces give the XE220E the ability to fulfill various work, and improve productivity and efficiency.

► SAFETY SOLUTIONS

A rear camera, and large side mirrors, powerful LED lighting, anti-slip steps and platforms. Guard rails for safe access to the upper structure. The ROPS (Roll Over Protective Structure) and the OPG (Operator Protective Guard) cabin ensure the operator's safety.

► VERSATILITY

Multiple boom and arm sizes together with special configurations are available to efficiently carry out any task your business requires.

► EASY-TO-USE ATTACHMENTS

Programmable auxiliary line is provided to support your hydraulic attachments like, hammer and many more.

► COMFORTABILITY

To ensure operator comfort, we offer a spacious cab with low noise and vibration levels and excellent all-round visibility. Mechanical suspension seat and air conditioning with climate control as standard.

► CONTROLLABILITY

8 work and 3 power modes, with a user-friendly 8" TFT LCD color monitor.

► STRONG POWER

The Cummins B6.7 stage V/Tier 4 Final engine is exceptionally powerful - with high torque at low revs. This makes maximum flow is already available at low rpms with a fuel-efficient engine regime.

► ADVANCED FILTRATION

Easily accessible highly efficient filters and cleaners that remove all contaminations from your jobsite and protect your investment in the best possible way.

► SIMPLE AND EASY MAINTENANCE

Easy access to all compartments. Maintenance data and signs are directly available from monitor.

► UNDERCARRIAGE DURABILITY

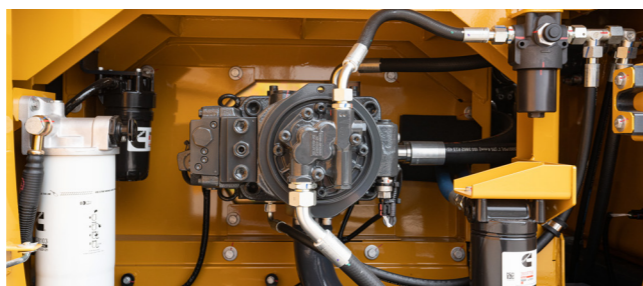
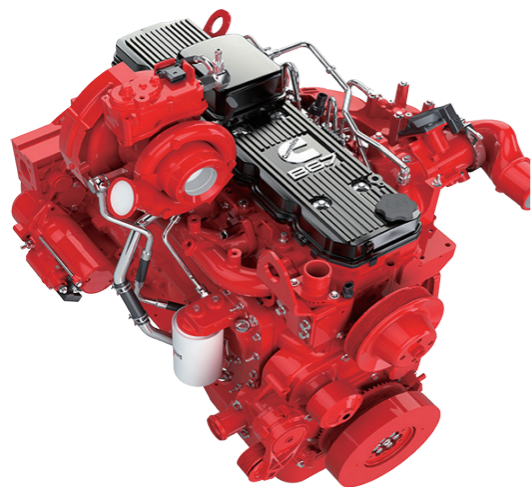
The CAE-designed X-shape undercarriage enables even weight distribution, increasing stability and durability, and prevents damage from rocks and debris.



► Power without compromise

The XE220E makes handling your task efficient and comfortable.

- The optimized Kawasaki-KPM hydraulic system makes sure that all that engine power is used in the best possible way by delivering accurate maximum pumping in a smooth way.
- All that power has reliably increased digging power, the lifting capacities, and the traction force.
- Greater fuel efficiency means you can keep costs down and reduce environmental impact.



POWER MATCH TECHNOLOGY

The XE220E is equipped with a Cummins B6.7 engine. Famous for its excellent fuel efficiency, reliability, and long service intervals, it combines exceptional power output and high torque at low revs. Selective Catalytic Reduction (SCR) technology - combined with a Diesel Particulate Filter (DPF) - ensures compliance with Stage V regulations.

If the engine is the heart of the excavator, the XICS (XCMG Intelligent Control System) is its brain – providing a perfectly synchronized communication link between the engine's ECU (Electronic Control Unit) and the hydraulic system. The CANBUS (Controller Area Network) system enables a constant flow of information between engine and hydraulic system, so that power is delivered exactly as needed.

FUEL ECONOMY TECHNOLOGY

- A choice between 3 power modes and 8 attachment modes guarantees optimum performance under all conditions.
- Electronic control of fuel consumption.
- The auto-idle function reduces the engine speed when the controls are inactive for a preselected amount of time or when the safety lever is switched off. The engine will immediately return to its original selected speed when the operator touches the controls.
- For optimum cooling, the fan speed is controlled by a viscous clutch that results in lower fan noise with better fuel efficiency

- The XE220E cabin is designed to support increased productivity with a spacious comfortable operator environment. The pressurized cab is ISO-certified for your safety and offers a comfortable Mechanical suspension seat with several storage compartments and a clear all-round view of your jobsite. The reduced noise and vibration levels with automatic air-conditioning/climate-control will make your workday more easy and comfortable.

Advanced control technology

Ergonomic, advanced, and simple-to-operate joystick delivers ultra-precise and smooth control over all movements.

Air conditioning with automatic climate control

A choice from 5 different working modes to regulate the airflow and to adjust the system's air temperature maintains the optimal desired temperature. A recirculated air function is also available.

DAB radio as standard

DAB radio (FM/AM/RDS/DAB/Bluetooth/USB) as standard. Meet your multi-faceted entertainment needs.

Storage space

The new cab has 5 storage compartments - including a hot/cool box, a storage box, document bag, sundry box and a cup holder

Cab suspension

Even at the roughest applications where you are working, the cab's improved new suspension system dampens and smoothens out unwanted feedback from your jobsite.





Simple and Easy Control

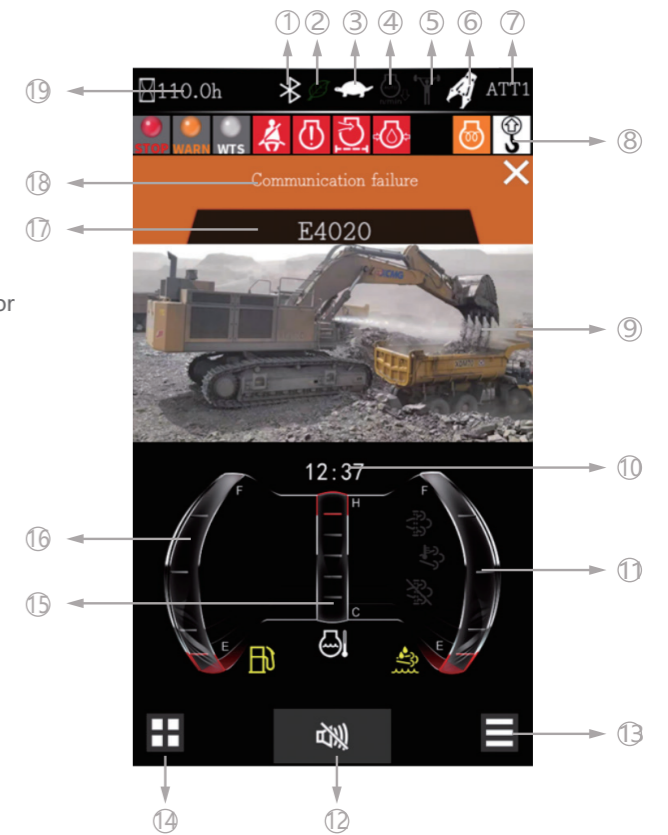
Machine interfaces

All machine interfaces – including joysticks, keypad, panel and larger LCD monitor – are ergonomically designed for optimum control and efficiency, resulting in increased productivity and workplace wellbeing. The switches have been simplified and climate control is now integrated into the keypad for easy adjustments.

- The new multi-function 8" TFT LCD monitor displays a comprehensive range of useful technical information, allowing you to check the machine's status and settings at a glance.
- Highly sensitive and low-effort joysticks and clear convenient controls enable you to work smooth and safely with minimum effort for increased comfort and efficiency.

Intelligent Monitor

The upgraded 8" TFT monitor features a day and night display with full user access to the machine settings and maintenance data. Any abnormality is clearly displayed on the screen, allowing you to work safely and confident with an accurate overview of all conditions.



- | | |
|-------------------------------------|--------------------------------|
| 1.Blue-tooth | 2.Energy-saving mode indicator |
| 3.Travel speed indicator | 4.Automatic idling indicator |
| 5.Power reinforcing indicator | 6.Implement mode indicator |
| 7.Power mode indicator | 8.Alarm icon prompt area |
| 9.Surveillance image | 10.Clock time |
| 11.Urea level | 12.Buzzer silence indicator |
| 13.Main interface function settings | 14.Main menu |
| 15.Coolant temperature gauge | 16.Fuel level gauge |
| 17.Fault code display | 18.Fault analysis content |
| 19.Work hour display | |

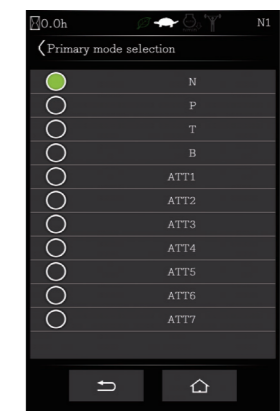
Dynamic power management

- Activating the power boost control system increases the digging force by 8.8%
- Auto-idling starts 4 seconds after all controls are returned to the neutral position.

8 work modes and 3 power modes

Deliver the needed power according to your specific application while minimizing fuel consumption:

- N: Normal mode
- P: Power mode
- T: Plateau mode
- B: Breaker mode
- ATT1: Hydraulic shear mode
- ATT2: Hydraulic thumb mode
- ATT3: Hydraulic rotating attachment mode
- ATT4/ATT5/ATT6/ATT7: Auxiliary mode



- Spacious operator's space
- Travel pedals
- Mechanical suspension seat
- Power outlet
- Throttle dial
- All around AC and heating
- DAB radio
- Hydraulic joystick
- High quality speaker
- Hammer control pedal
- Engine stop switch
- LCD color monitor
- Safety lever
- Cup holder

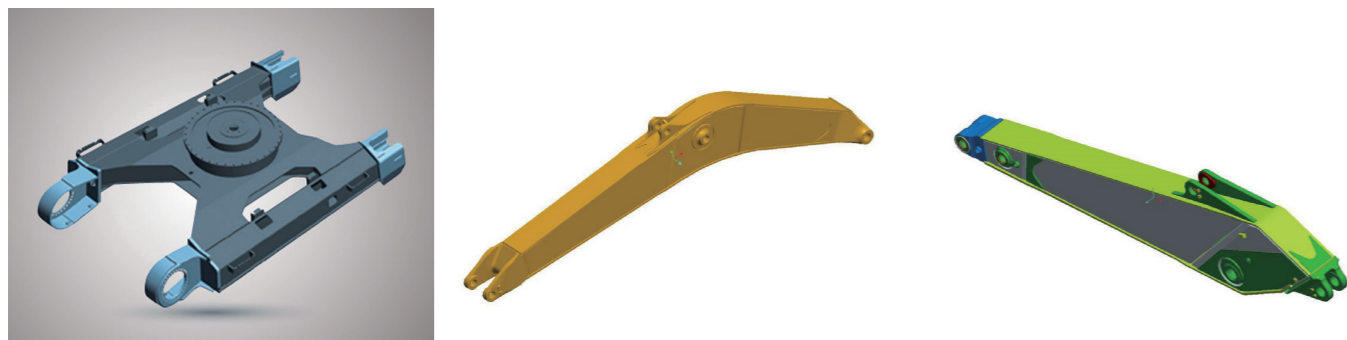
› Designed for long-term robustness and safety

XCMG has developed one of the most rigorous strength and reliability testing procedures, The XCMG E-series features durability under the most extreme conditions and is therefore one of the most popular brands in its home market.

We continually manufacture the most durable machines in order to reduce the cost of ownership. The robust upper frame, undercarriage structure, and front attachments show their real value in tough working conditions and guarantee higher productivity.

Reinforced durability of the X-chassis

The X-shaped undercarriage has a higher durability than demanded on the jobsite, as proven through numerous tests including road tests and virtual simulation.



Undercarriage durability with easy maintenance

- The chain is composed of sealed, self-lubricating links for long-term performance
- Long life track tensioners and the idlers
- Heavy-duty wear resistant cast sprockets
- Durable lubricated track rollers

Strengthened boom and arm

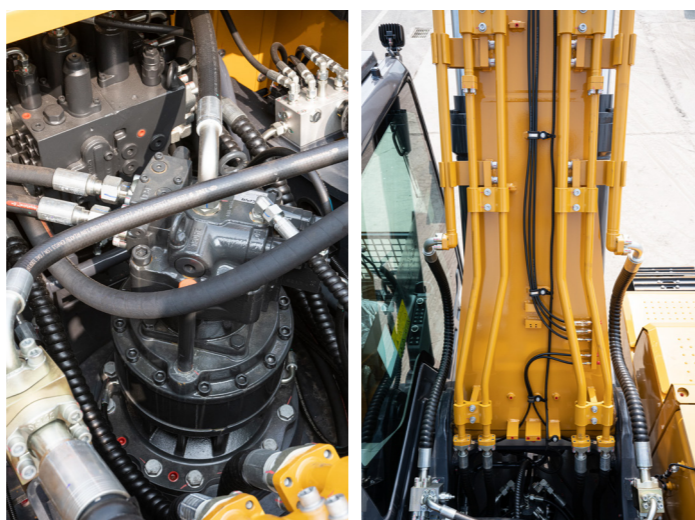
FEA has been used to calculate the best load distribution throughout the machine's structure. For better protection of the base of the arm, reinforced bars have been added. The arm structure has been strengthened for the roughest conditions.

Hi-grade (high-pressure) hoses

The E-series uses a new type of high-pressure hoses with improved heat and pressure resistance to increase the durability of the machine.

Reinforced pin, bush and polymer shim

The new series improved the lubricity of the connecting parts between the machine and attachments. Gaps with attachments are minimized by wear-resistant long-life pins, bushes, and polymer shims, supporting the highest performance with invariable durability.



› Excellent serviceability

Our machines are designed for simple routine maintenance, while skilled XCMG technicians are available to provide extra support if needed. To get the most out of your machine, choose the package you need from a broad range of service agreements. Uptime, productivity and residual value are all maximized, making the XE220E an economical and rewarding choice.



Simple and easy maintenance

- A large guard rail is installed along with anti-slip steps and plates for safer and easier access to the upper structure.
- The cab's air-conditioning filter is lockable and placed on the cab's side for easy access.
- A battery cut-off switch to easily disconnect the battery for jobsite-required safety measures.
- Shut-off valves on the pre-filter piping line and the fuel tank drain piping makes servicing easier and prevents pollution from leakage.
- The engine parts can be reached easily via the top and side panels.
- For extra accessibility and servicing convenience, all filters (engine oil filter, fuel pre-filter, fuel filter and hydraulic pilot filter) are located in the pump compartment.

Pre-start monitoring system

The XE220E has a pre-start monitoring system that shows you coolant temperature, hydraulic oil temperature, engine oil pressure, fuel levels and AdBlue® level. It will also show fluid and filter intervals to keep the machine in top performing condition.

Proactive maintenance solutions

- Extended warranty: covering parts, travel, and labor.
- Routine maintenance: your dealer will support you with routine service at regular intervals.
- Genuine parts: manufactured and tested to ensure long lifetime of your machine.

SCR tank and easy diesel filling

The ECU (Engine Control Unit) monitors with sensors of the AdBlue® system and warns the operator for potential system malfunctions. A fuel filler pump, an on-board pump system, lets you fill your fuel tank quickly from an external source (like a fuel drum) – the system stops automatically when the fuel tank is full or the fuel source is empty.

Centralized lubrication greasing points

To make maintenance easier.

■ Engine

Designed to deliver superior performance and fuel efficiency, the Cummins Stage V diesel engine fully meets the emissions regulations. To optimize machine performance, the engine uses high-pressure fuel injectors, a VGT™ turbocharger inter-cooler, and electronic engine controls. 4-cycle water-cooled, turbocharged, Exhaust Gas Recirculation (EGR) and \ Selective Catalytic Reduction (SCR) without a Diesel Particulate Filter (DPF).

XE220E	
Model	Cummins B6.7
No. of cylinders	6
Rated power at 2,200 rpm	
(SAE J1995)	129 kW (173 hp) at 2,200 rpm
(SAE J1349)	114 kW (153 hp)
(ISO 9249)	114 kW (153 hp)
Max. torque at 1,300 rpm	881 N.m
Idle (low - high)	900 - 1,300 rpm
Piston displacement	6.7 L
Bore × stroke	107mm × 124 mm
Starter	24 V × 7.8 kW
Batteries - Alternator	2 × 12 V, 150 Ah - 24 V, 70 A
Air filter	*Donaldson's the latest PSD air filter and pre-filtered dust separator

■ Undercarriage

Extremely robust construction throughout - made of high-quality, durable materials, with all welded structures designed to limit stresses.

- Lifetime lubricated track rollers, idlers and sprockets fitted with floating seals
- Track shoes made of induction-hardened alloy with triple grouser
- Heat-treated connecting pins
- Hydraulic track adjuster with shock-absorbing tension mechanism

• Number of rollers and track shoes per side

XE220E	
Upper rollers (standard shoe)	2
Lower rollers	9
Number of links and shoes per side	49
Overall track length	4,455

■ Swing mechanism

The swing mechanism uses an axial piston motor, driving a 2-stage planetary reduction gear for maximum torque bathed in oil.

- Swing bearing: single-row, shear type ball bearing with induction hardened internal gear
- Internal gear and pinion immersed in lubricant

• Swing speed & torque

XE220E	
Maximum swing speed	11.8 rpm
Maximum swing torque	69.5 kN.m

■ Drive

An independent, high-torque axial piston motor through a planetary reduction gearbox drives each track. Two levers with foot pedals guarantee smooth travel with counter-rotation on demand. The track frame protects the travel motors with hydraulically released multi-disc brakes and planetary gears.

• Swing speed & torque

XE220E	
Travel speed (low - high)	3.3-5.4 km/h
Maximum traction	214 kN
Maximum gradeability	35° / 70%

■ Hydraulic system

The XICS (XCMG Intelligent Control System) is the brain of the excavator - minimizing fuel consumption and is enabling the efficiency of the hydraulic system to be optimized for all working conditions. To harmonize the operation of the engine and the hydraulics, the XICS is connected to the engine's electronic control unit (ECU) via a data transfer link.

- The hydraulic system enables independent and combined operations -2-speed travel offers either increased torque or high travel speed
- Cross-sensing pump system and auto-deceleration system improves fuel efficiency.
- 8 work modes, 3 power modes
- Computer controlled pump flow control

• Pump flow and system pressure

XE220E	
Main pumps, type	*2 × variable displacement tandem axial piston pumps*
Maximum flow	2 × 220 L/min
Pilot pump, type	Gear pump
Maximum flow	17 L/min
Relief valve settings	
Pressure up	34.3/37 MPa
Travel	32.3 MPa
Swing	27.5 MPa
Pilot	3.9 MPa

■ Hydraulic cylinders

High-strength steel piston rods and cylinder bodies. A shock-absorbing(cushion) mechanism fitted in all cylinders for shock-free operation and extended piston life.

Cylinders	Quantity	XE220E
Boom	2	120 × 85 × 1,221
Arm	1	140 × 100 × 1,475
Bucket	1	120 × 85 × 1,060

■ Weight(Triple grouser)

Shoe width (mm)	Operating weight (t)	Ground pressure (kPa)
600(Std.)	23,500	48.9
700	23,600	42.1
800	23,700	40

■ Fluid capacities

XE220E	
Fuel tank	400 L
Hydraulic oil tank	150 L
Engine oil	24 L

■ Cab

Optimal climate control is provided by the integrated air-conditioning and heating system. An automatically-controlled fan supplies the pressurized and filtered cab air, which is distributed throughout the cab from multiple vents. The Mechanical suspension seat includes a seat belt. The operator can adjust the ergonomic seat and joystick console separately according to his preferences.

• Noise emission

XE220E	
Noise level LpA (ISO 6396)	71 dB(A)
Noise level LwA (ISO 6395)	103 dB(A)

■ Component weights

Item	Unit	XE220E	Remarks
Upper structure	kg	11,730	With counterweight
Lower structure assembly	kg	7,570	600 mm shoe
Front assembly	kg	3,650	Without cylinder
Counterweight	kg	4,200	Standard counterweight
Boom	mm / kg	5,680/1,520	Including bushing
Arm	mm / kg	2,400/720	Including bushing

■ Buckets

Bucket type	Capacity (m³) SAE	Width (mm)		Weight (kg)	Boom 6 m	
		With side cutters	W/o side cutters		Arm 2.4 m	Arm 2.9 m
					Shoe 600 mm	Shoe 600 mm
GP	0.5	-	608	656	A	A
	0.6	986	913	651	A	B
	1.2	1,519	1,446	894	B	C
HD	0.93	1,276	1,203	816	A	A
	1.05	1,354	1,354	959	A	A
	1.2	1,325	1,280	935	A	B
SD	0.8	960	960	877	A	A
	0.9	1,060	1,060	925	A	A
	1	1,146	1,146	965	A	A

GP: General purpose; HD: Heavy duty; SD: Severe duty;

A: Suitable for materials with a density less than or equal to 2,100 kg/m³;

B: Suitable for materials with a density less than or equal to 1,800 kg/m³;

C: Suitable for materials with a density less than or equal to 1,500 kg/m³;

Based on ISO 10567 and SAE J296, arm length without quick-coupler. For reference only.



Lifting Capacities

■ Model: XE220E Standard undercarriage width: 2,990 mm • W/o bucket • Unit (kg)

B \ A	A	1.5 m		3 m		4.5 m		6 m		7.5 m		At Max.Reach		
		☺	☹	☺	☹	☺	☹	☺	☹	☺	☹	☺	☹	A
7.5 m	kg							*4,617	*4,617			*4,677	*4,677	6.1 m
6.0 m	kg							*4,506	*4,506			*4,664	3,918	7.3 m
4.5 m	kg					*5,596	*5,596	*4,982	*4,982	*4,733	3,711	*4,747	3,363	8.0 m
3.0 m	kg					*7,294	*7,294	*5,763	4,951	*5,066	3,619	*4,887	3,087	8.4 m
1.5 m	kg					*8,924	6,940	*6,585	4,730	*5,475	3,512	4,801	2,984	8.4 m
0.0 m	kg			*5,627	*5,627	*9,847	6,684	*7,190	4,572	5,598	3,429	4,904	3,031	8.3 m
-1.5 m	kg	*6,332	*6,332	*10,478	*10,478	*10,010	6,610	*7,405	4,503	5,568	3,402	5,305	3,256	7.8 m
-3.0 m	kg	*11,478	*11,478	*13,503	12,494	*9,471	6,662	*7,056	4,531			*5,846	3,791	6.9 m
-4.5 m	kg			*11,049	*11,049	*7,898	6,850					*6,071	5,148	5.6 m

☺ : Over front

☹ : Over side or 360°

1. The lifting capacity is based on the ISO10567 standard.

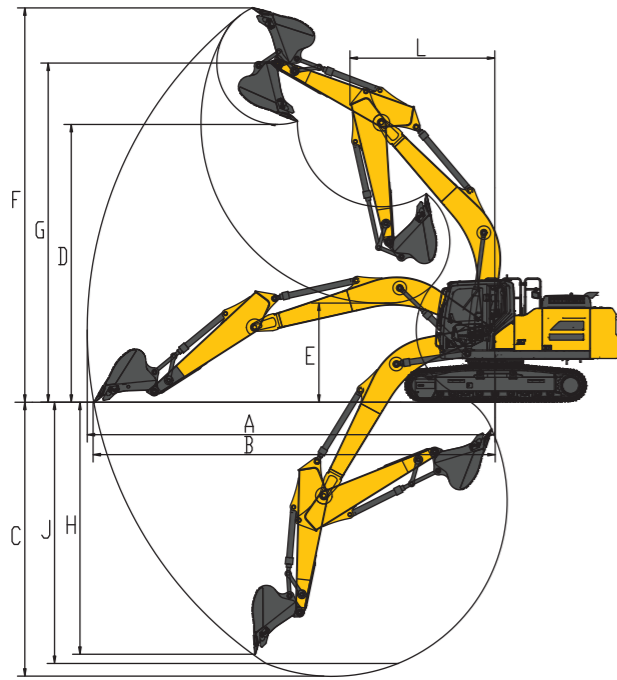
2. * = The maximum lifting capacity is limited by the hydraulic capacity of the machine.

3. The lifting capacity does not exceed 87 % of the hydraulic capacity or 75 % of the tipping load with the machine on level and firm ground.

4. The operator should be familiar with the machines operating- and maintenance manual. Local regulations concerning the safe operation of machinery must be followed at all times.

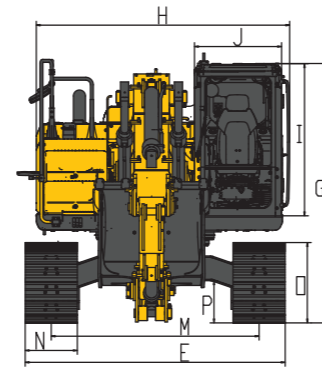
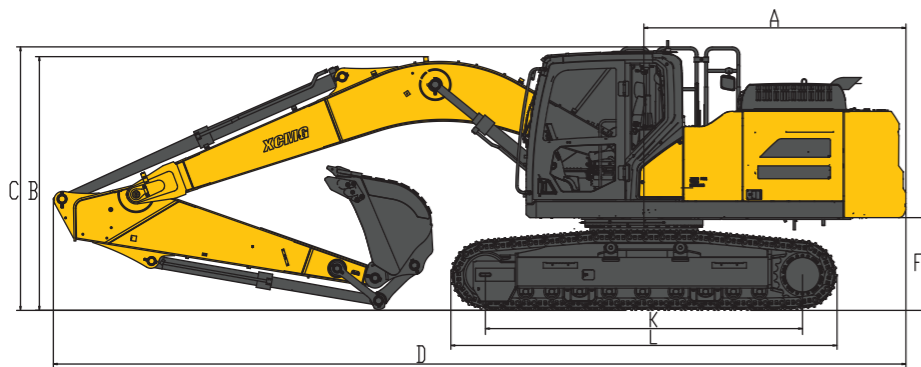
5. The lift diagrams only covers machines that are originally built by XCMG: without lifting chains and any other lifting equipment.

6. When the excavator is used to lift or handle materials, it must comply with local regulations and be equipped with the necessary hose burst valves and an overload warning device complying with EN474-5.



Working range

	Arm: 2,400 mm Bucket: 1.2 m ³	Arm: 2,900 mm Bucket: 1.05 m ³	
A	Max. digging reach	9,430 mm	9,940 mm
B	Max. digging reach (ground)	9,260 mm	9,780 mm
C	Max. digging depth	6,170 mm	6,680 mm
D	Max. loading height	6,650 mm	6,780 mm
E	Loading height	2,980 mm	2,400 mm
F	Max. digging height	9,500 mm	9,620 mm
G	Max. bucket pin height	8,120 mm	8,240 mm
H	Max. vertical wall depth	5,550 mm	5,715 mm
I	Max. digging depth (8' level)	5,950 mm	6,500 mm
J	Min. swing radius	3,530 mm	3,530 mm



Dimensions

	Arm: 2,400 mm Bucket: 1.2 m ³	Arm: 2,900 mm Bucket: 1.05 m ³	
A	Tail swing radius	3,015 mm	3,015 mm
B	Shipping height (boom)	3,150 mm	3,000 mm
C	Shipping height (hose)	3,030 mm	3,030 mm
D	Shipping length	9,640 mm	9,810 mm
E	Shipping width	2,990 mm	2,990 mm
F	Counterweight clearance	1,067 mm	1,067 mm
G	Height over cab	2,985 mm	2,985 mm
H	Upper structure width	2,830 mm	2,830 mm
I	Cab height above house	1,778 mm	1,778 mm
J	Cab width	1,095 mm	1,095 mm
K	Tumbler distance	3,650 mm	3,650 mm
L	Track length	4,445 mm	4,455 mm

Dimensions

	Arm: 2,400 mm Bucket: 1.2 m ³	Arm: 2,900 mm Bucket: 1.05 m ³	
M	Track Gauge	2,390 mm	2,390 mm
N	Shoe width std	600 mm	600 mm
O	Track height	925 mm	925 mm
P	Ground clearance	485 mm	485 mm

Digging forces

	Arm: 2,400 mm Bucket: 1.2 m ³	Arm: 2,900 mm Bucket: 1.05 m ³	
	Bucket digging force	155 kN	149 kN
	Arm digging force	121 kN	111 kN

Standard and optional equipment

Engine

Urea Tank	●
Automatic preheating	●
Fuel-water separator with water level indication sensor	●
Fuel-water separator with heater [24 V]	○
Axial seal air cleaner	●
50°C high temperature ambient cooling assembly	●
Dust screen for radiator	●
Fuel marker	●
Fuel-water quick release device	●
Electronically controlled silicone oil clutch	●
Fuel filling pump 50 L/min	●
Fuel breather valve	●
Air filter service indicator	●
Auto-idle function	●

Hydraulic system

Auxiliary hydraulic valve	●
One way hydraulic line for hammer	●
Hydraulic quick coupler lines	○
Attachment tilting and rotating lines	○
Hydraulic oil ISO VG 46	●
Hydraulic oil ISO VG 32	○
Hydraulic oil ISO VG 68	○

Cab & Interior

Pressurized cab	●
Mechanical suspension seat	●
Control box	●
Front windshield divided 70/30 ratio	●
Double laminated windshield and other toughened windows	●
Sliding fold-in front window	●
Bi-directional air outlet air conditioner with defroster [automatic type][pressurization function]	●
Color LCD capable of displaying warning information,filter / liquid replacement information and working hours	●
Travel control pedal with detachable manual control lever	●
Double stereo speaker	●
Cup holder	●
Coat hook	●
Floor mat	●
Retractable seat belt [51 mm [2"] wide]	●
High and low travel speed switch	●
One-key boost mode	●
Reserve switch for working aids	●
Sunlight protection,roof	●
Top sunroof	●
Windshield wiper with intermittent feature	●
File packet	●
Rear window emergency exit	●
Hammer for emergency escape	●

Undercarriage

Track guard for both sides	●
2x9 bottom roller	●
2x2 top roller	●
Bottom frame traction ring	●
600 mm (24") triple grouser track shoes	●
Protective device kit: undercarriage bottom sealing plate travel motor sealing plate	●
700 mm (28") triple grouser track shoes	○
800 mm (31") triple grouser track shoes	○

Working device

Boom 5.68 m	●
Arm 2.91 m	●
1.05 m ³ reinforced bucket	●
Arm 2.4 m	○
0.9 m ³ rock bucket	○
1.0 m ³ rock bucket	○
1.2 m ³ Earthwork bucket	○
0.71 m ³ (2,000 mm/ 78.74 in) ditching bucket	○
0.5 m ³ (600 mm/24in) ditching bucket	○

Electronic system

Battery [2x 850 CCA]	●
70 A 24 V DC generator	●
7.8 kW starter motor	●
5 V USB interface	●
Engine stop switch in the cab	●
Right-view camera	○
Rear-view camera	○
270° range image	○
DAB radio (FM/AM/RDS/DAB/Bluetooth/USB)	○
Travel buzzer with switch	●
Beacon lamp	●
2 LED cab-mounted front lights	●
1 LED cab-mounted rear light	●
2 LED boom-mounted lights	●
12 V power interface	●
Ceiling light	●

Counterweight

4.2 t counterweight	●
---------------------	---

Lubrication system

Centralized lubrication greasing points	●
Automatic lubrication system	○

Safety

Side impact beam	○
Driving door locks and cabin locks	●
Alarm horn	●
Isolation plate between engine and oil pump chamber	●
Battery circuit breaker	●
Overheat alarm	●
Safety handrails and pedals	●
Anti-skid plate/anti-skid paste	●
Hydraulic safety locking lever	●
Right and left rear-view mirrors	●
Counterweight rear-view mirrors	○
Roll over protective structure [ROPS]	●
Operator protective guards [OPG]	○
Safety net on the front lower windshield	●

Standard: ●
Optional: ○

Some of these options may be standard in some markets. Some of these options may not be available for certain markets. Please check with your local XCMG dealer for more information about availability or to adapt your machine to your application needs.

Optimum services , XCMG Guaranteed



XCMG approved attachments



Genuine parts



Extension of warranty



Financial solutions



Maintenance contract



Telematics



Monitoring systems

Professional Integrated Complete Solutions

XCMG group has built a strong reputation based on the quality, reliability and durability of its construction machinery. What's more, XCMG has gradually established a service network to constantly provide its local integrated and highly efficient complete solutions for all users.

Full range of services ready for you

In order to respond to your needs as fast as possible, XCMG experts are on their way to your job site from one of our facilities near you. Full range of services are available in order to reduce your total cost of ownership and increase your revenue.



XCMG Global Spareparts System



Mobile cranes



Excavators



Aerial work platforms



Wheel loaders



Road machinery

